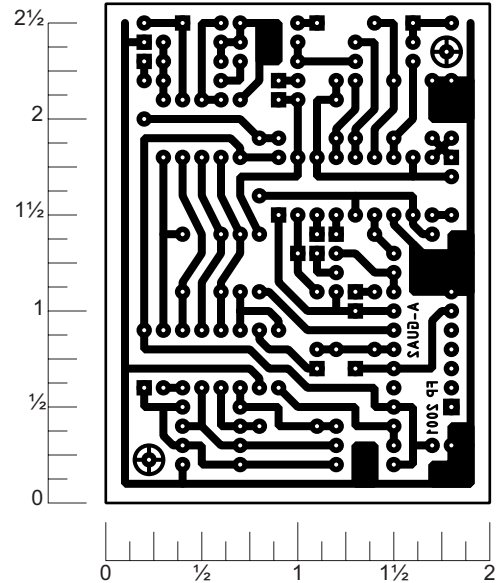
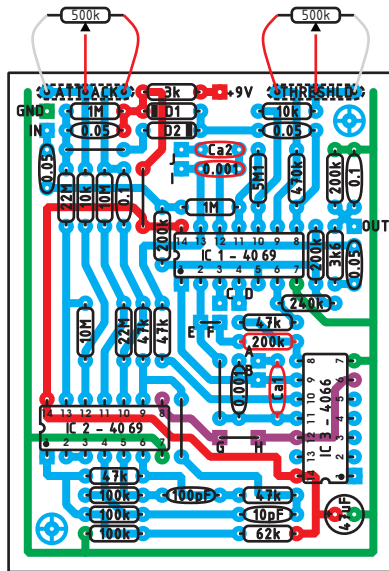


The MXR Envelope Filter can be built on this board. Pads A-J are for mods, the layout is populated as the stock MXR-EF. Off board components except for the potentiometers are not shown on the layout. Trademarks are property of their owners.



Layout and presentation by Francisco Peña 2001 - 2003©.  
All rights reserved. Authorization for personal use only.  
any commercial use is forbidden.  
Permission for posting/serving limited to  
<http://www.tonepad.com>  
Permission refused for posting from other sites.

## Parts List

### Resistors

- R1 - 3k6
- R2 - 200k
- R3 - 10M
- R4 - 3k
- R5 - 10k
- R6 - 5.1M
- R7 - 200k
- R8 - 1M
- R9 - 22M
- R10 - 10k
- R11 - 470k
- R12 - 200k
- R13 - 240k
- R14 - 62k
- R15 - 10M
- R16 - 100k
- R17 - 1M
- R18 - 47k
- R19 - 200k
- R20 - 100k
- R21 - 100k
- R22 - 47k

### Diodes

- D1 - 1N914
- D2 - 1N914

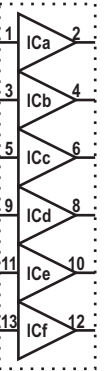
### Schematic

### Capacitors

- C1 - 0.1uF
- C2 - 0.05uF
- C3 - 0.05uF
- C4 - 0.1uF
- C5 - 0.05uF
- C6 - 0.001uF
- C7 - 0.001uF
- C8 - 100pF
- C9 - 0.05uF
- C10 - 10pF
- C11 - 47uF

### ICs

- IC1 - CD4069
- IC2 - CD4069
- IC3 - CD4066



### Emphasis control:

Change R19 to 47k and add a 500k pot between F&E wired as variable resistor.

### Reverse Sweep:

Add a DPDT switch wired as detailed below.

### Filter range mod:

Add capacitor Ca1 and Ca2 (470pF), change C7 and C6 to 560pF and add a DPDT switch between A&B and I&J.

